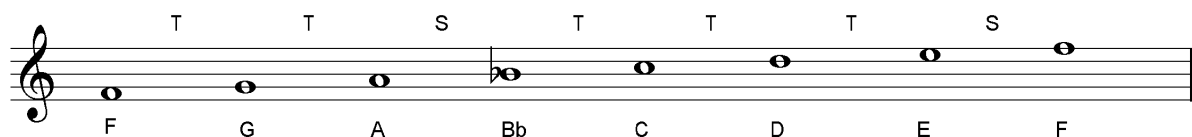


F MAJOR SCALE

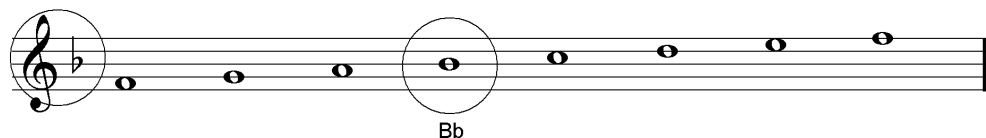
The last scale we need to look at for the grade 1 exam is F major:



The F major scale doesn't have any sharps, but it has one flat - B flat. This makes the first semitone step in the scale, from A to Bb, between notes 3-4.

Remember, we can't use A sharp instead of B flat, because we've already got an A in the scale (3rd note).

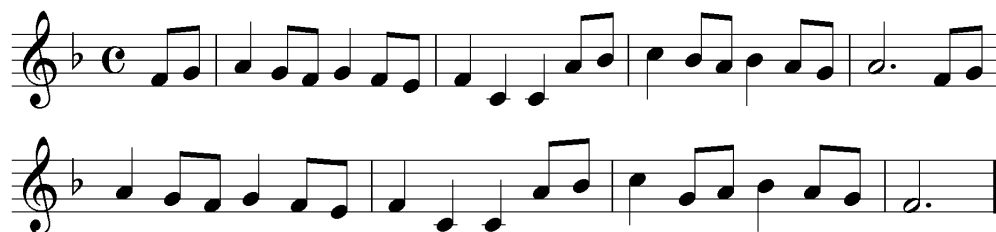
Music written in the key of F major normally uses a **key signature** of Bb, written on the middle line at the beginning of **every** treble clef staff, after the clef, to remind the player to play **B flat** every time a B is written.



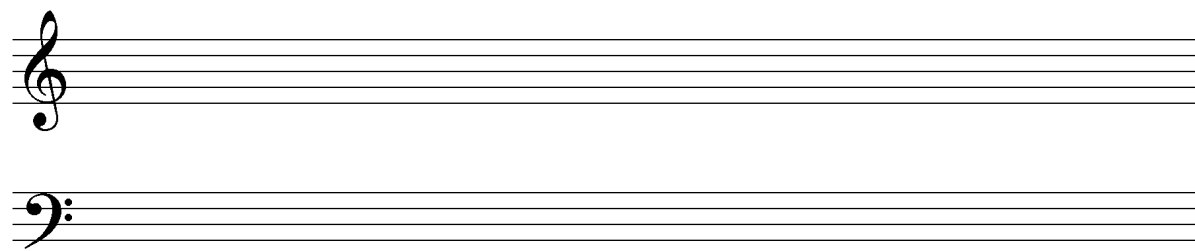
In the bass clef, the Bb in the key signature is written on the second line from the bottom:



Here is a tune in the key of F major. This is "The Bagpipers" by Alexander Goedicke.



Practise writing out the F major scales here:



KEY SIGNATURES EXERCISES

EXERCISE 1

Name the major keys shown by these key signatures.



EXERCISE 2

Add the correct key signatures to these bars.

a. G major



b. F major



c. G major



EXERCISE 3

Write the letter name of each of the notes in the box, including the accidental symbol where necessary.

