
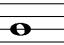
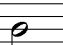
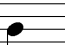
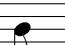
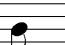




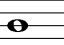
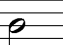
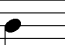
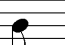
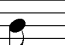
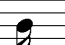
CHAPTER 2 | RHYTHM

TIME VALUES OF NOTES AND RESTS

Each different shape of musical note or rest represents a different time value. For ABRSM grade 5 theory you need to be able to understand and handle rhythms using any of the note values shown here. By this stage you should already be very familiar with at least the crotchet (quarter note), minim (half note), semibreve (whole note) and quaver (8th note). The other note values are all twice or half the value of these more common notes.

breve	semibreve	minim	crotchet	quaver	semiquaver	demisemiquaver
						
8	4	2	1	1/2	1/4	1/8

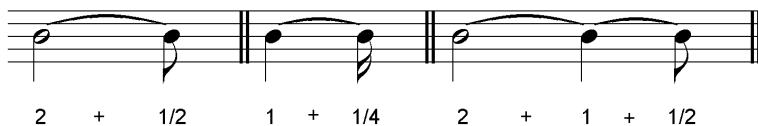
These are the names used in the USA. You can use either system in the ABRSM exams.

double whole	whole note	half note	quarter note	8th note	16th note	32nd note
						
8	4	2	1	1/2	1/4	1/8

When working with the very fast note values, it is useful to remember how many of each fit into one crotchet (quarter note). This will help you add up note values correctly. If you use the next-smallest type of note, you need double the number used, to fill the same amount of time.



Ties add the value of two or more notes together. (Only notes of the same pitch can be tied together).



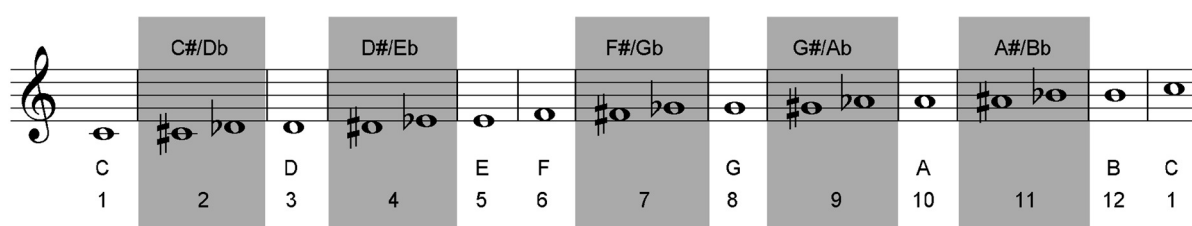
CHAPTER 3 | SCALES

MAJOR AND MINOR SCALES

A **scale** is simply a series of notes in a particular pattern. Patterns for each different type of scale (e.g. major vs. minor) are defined by the **semitone** distance between each note in the scale.

There are twelve individual notes available – seven natural notes (white notes on the piano), and five sharp/flat notes (black notes on the piano). These twelve notes are all one semitone apart. A distance of two semitones is called a tone.

These are the twelve semitones starting from C. Notes in the shaded boxes have two spellings but share the same sound. These pairs of notes are “enharmonic equivalents”.

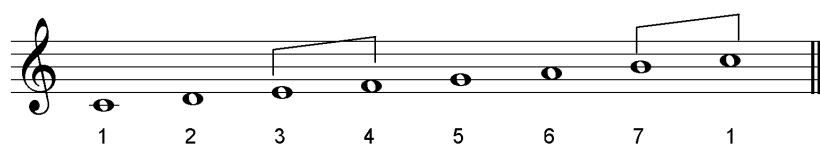


(Not all enharmonic equivalents are shown here. For example, F can also be spelled “E#” or “Gbb”, etc.)

For ABRSM Grade 5, you need to know all the major and minor scales with up to 6 sharps/flats in the key signature. (See the end of the PDF for a reference sheet).

MAJOR SCALES

The easiest scale to learn is the C major scale, because it uses all the **natural** notes, with no sharps or flats. If you know how to write this scale, you can use it as a template, to write any other major scale.



The two most important facts about the major scale are:

- Each musical **letter** name (A-G) is used only **once**, except the first and last notes, which are the same.
- The distance between all the notes is a **tone**, except for notes 3-4 and 7-1, which are **semitones**.

PROGRESSIONS AND CADENCES EXERCISES

EXERCISE 1

1. How many chords make up a cadence?
2. What is the difference between a progression and a cadence?
3. Using Roman numerals, give the 5 acceptable cadences you can use in the Grade 5 exam.
4. When is a melody note considered to be a **non-chord** note?
5. True or false: all melody notes identified as **chord notes** must be present in the selected chord.
6. True or false: the only way to end a cadence is with chord I or chord V.

EXERCISE 2

Describe each of the following cadences as **perfect**, **plagal**, or **imperfect**.

a.

b.

c.

d.

e.