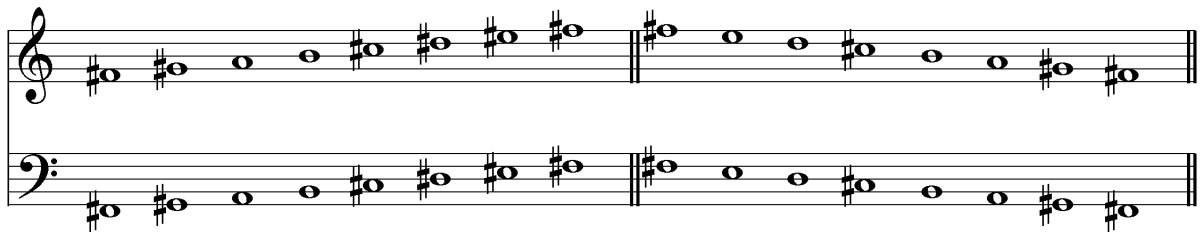


Here are the F# minor melodic scales. They use D# and E# on the way up, but D and E natural on the way down.



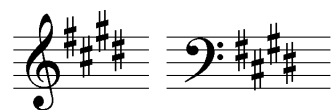
E# usually appears quite a lot in music written in the key of F# minor, because it is the leading note and is part of the dominant chord (C# major).

Here is the opening of a 19th century piano piece in F# minor called “Sad Moments”, by Erkki Merlatin. Notice how the melody uses notes from both the ascending and descending melodic minor scale (e.g. bar 2, E and D and bar 4, D# and E#). The choice of notes used depends on the direction of the melody, and whether the leading note is followed by the tonic. E is sharpened when it is followed by the tonic (F#). D is sharpened to avoid the large interval between D natural and E#.



C# MINOR

The C# minor scales share most of their notes with the E major scale. Both keys use the notes C#, F#, G#, and D#, so there are four sharps in the key signature.



Here are the C# minor harmonic scales. The 7th note of the scale is B#, which is another spelling of the note C natural. But although the notes C natural and B# are played the same way, only B# is the correct note in a scale of C# minor.



WORKING OUT INTERVALS

In the exam you will probably be asked to add notes to make a named interval, and also to give the quality and/or number of a given interval.

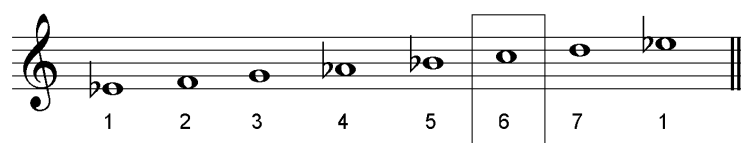
ADDING NOTES

Here is an example question.

Add a note after the given note to make an interval of a major 6th. The key is Eb major.



Work out the scale of Eb major, and find the 6th degree of the scale.

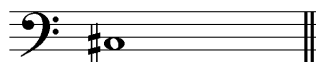


The note C should be added after the Eb:



Here is another example.

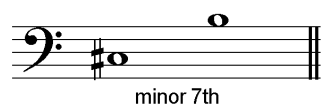
Add a note after the given note to make an interval of a minor 7th. The key is C# minor.



You have been asked for a minor 7th, so use the descending melodic minor scale. Don't forget that in a descending scale, the degrees are in reverse.



We need to add a B after the C#.



DEGREES OF THE SCALE AND TONIC TRIADS EXERCISES

EXERCISE 1

- In a melodic minor ascending scale, which degree(s) of the scale must be raised?
- In a harmonic minor ascending scale, which degree(s) of the scale must be raised?
- What's another name for the first or eighth degree of the scale?

EXERCISE 2

Which degree of the scale do these melody extracts i) begin and ii) end on?

a. E major



etc.

b. F# minor



etc.

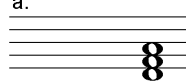
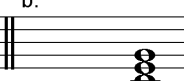
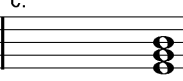
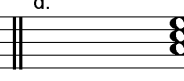
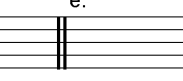
c. Eb major



etc.

EXERCISE 3

Add the correct clef and key signature to each of these tonic triads.

a.  b.  c.  d.  e. 

D major E minor G minor Ab major E major